



On Highway HDV Efficiency

Simon Mills
AVL

The background of the slide is a photograph of a modern building with a curved, glass-and-metal facade. The building is covered in solar panels and has a complex, organic shape. It is situated on a grassy area with a dark building in the background under a clear blue sky.

AVL / ETI: ON HIGHWAY HDV EFFICIENCY PROJECT

Development & Simulation of Vehicle & System
Models in AVL-CRUISE

22nd November 2017

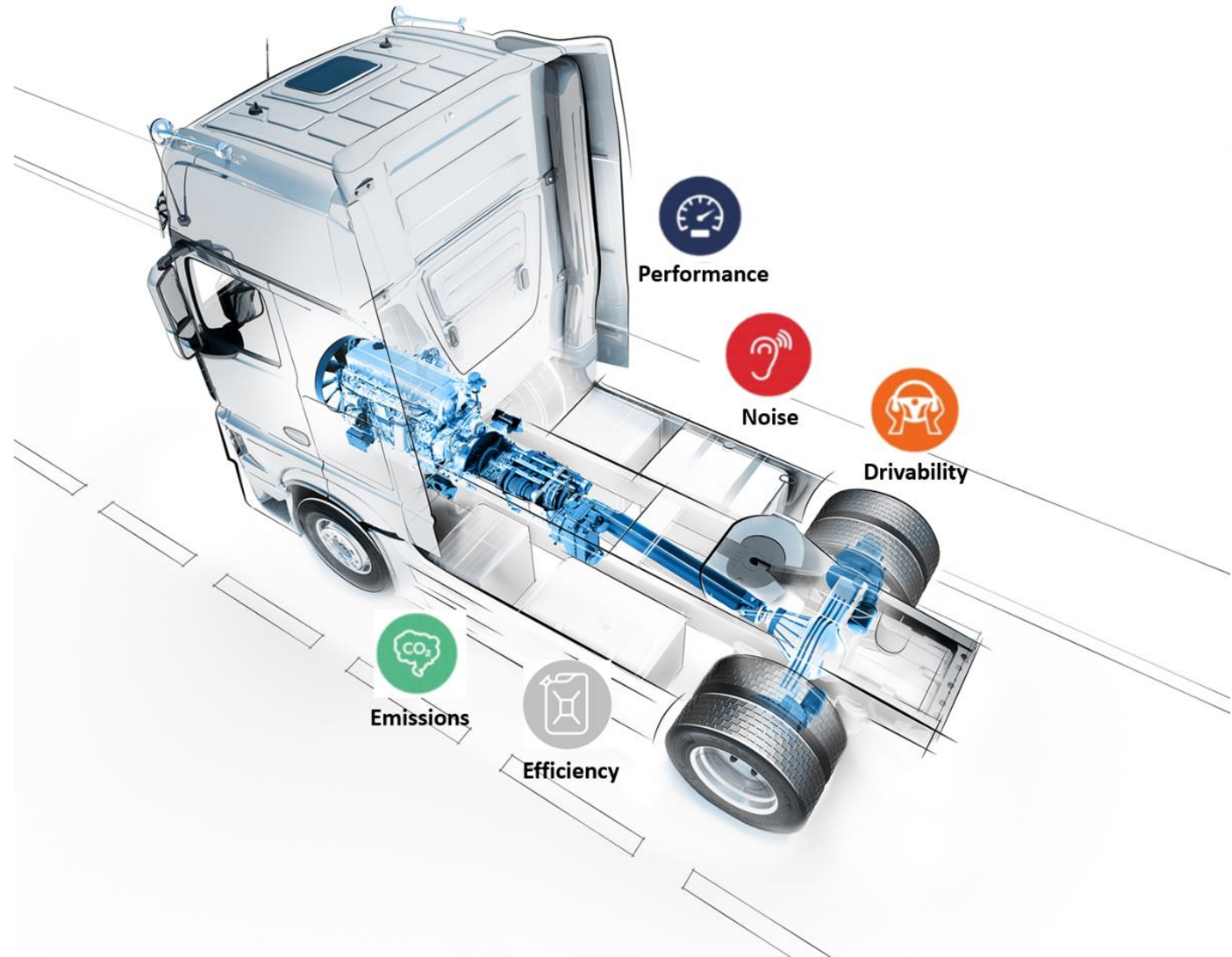
Simon Mills

AVL Powertrain UK
Ltd. (PTE)

Project Objective:

‘To create baseline and ‘new concept’ Heavy Goods Vehicle models and resulting technical information that can be used to verify outputs from previous ETI Project work and, subsequently, translated into the on-highway market.

Develop baseline and new concept AVL-CRUISE HGV models that are industry recognised and are created in a commercially available package that can be used to demonstrate performance to potential technology adopters.’



AVL AT A GLANCE



INNOVATION
1,500
granted patents



RESEARCH
10 %
of turnover
reinvestment



TEAM
8,600
employees

65 %
engineers and
scientists



EXPERIENCE
65
years

5
Powertrain
elements



GLOBAL PRESENCE
45 affiliates
>220 test beds



ONE
PARTNER

€ 1.27 billion
turnover 2015

GROWTH

+ 10 %

€ 1.4 billion
turnover 2016



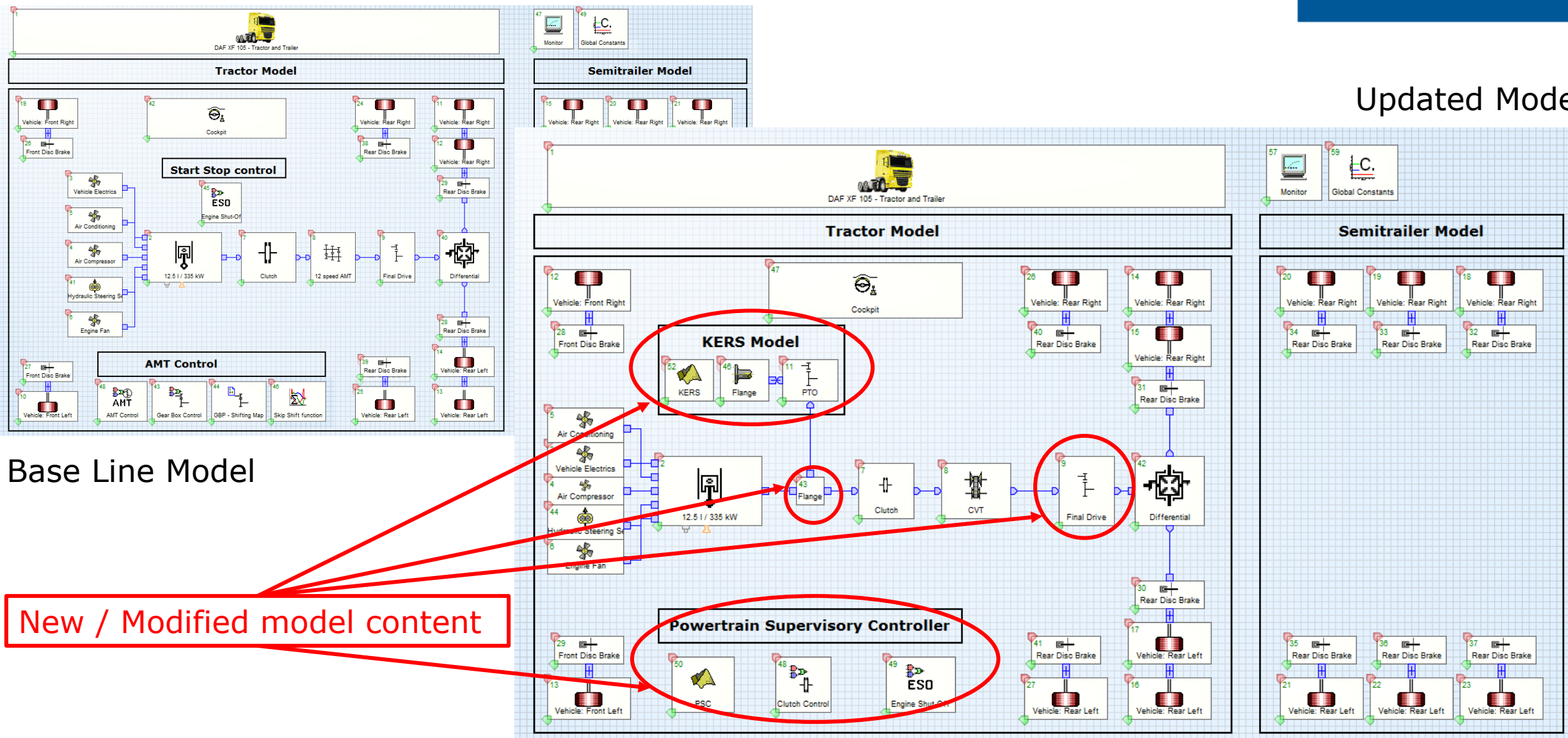
96 %
Export Quota

HDV SIMULATION IN AVL-CRUISE

Updated Model

Base Line Model

New / Modified model content



SIMULATION RUN IN AVL-CRUISE



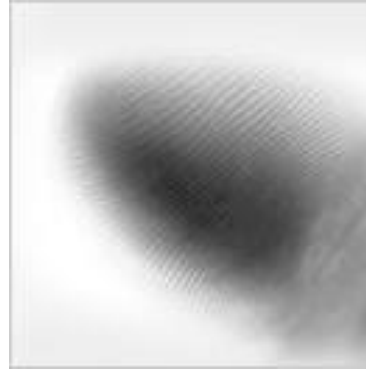
AVL VALUES & PHILOSOPHY



Pioneering Spirit



Customer Orientation



Problem-Solving
Capability



Responsibility



Independence

AVL & The ETI:

- Complementary Values
- Future Focused

'If I had asked people what they had wanted, they would have said faster horses.'

- Henry Ford



THANK YOU



www.avl.com